

*Alumni Tournament
of Champions*



Alumni Equestrian Events



ALUMNI TOURNAMENT OF CHAMPIONS & AEE NATIONALS

Alliant

PRIVATE CLIENT



**JUNE 8-9, 2024
USET FOUNDATION**

1040 POTTERSVILLE RD, GLADSTONE, NJ

SATURDAY WESTERN : DEBBIE KONESKI
SUNDAY HUNT SEAT JUDGE: JEAN BRILLMAN, "R"



PRIVATE CLIENT

Risk Management for the Equestrian Lifestyle

Our team of equine professionals have a passion for creating a full suite of insurance solutions for your home, family and other pursuits.

alliantprivateclient.com

Joe Norick
(561) 346-9000
Joe.Norick@alliant.com

Madison Newman
(212) 504-5985
Madison.Newman@alliant.com

Karen Monroe
(818) 321-5383
Karen.Monroe@alliant.com



SHOW RULES AND NOTES

- Entries open March 1, 2024 and are due May 24, 2024. **No late entries accepted.**
- ATOC Entries must be paid by May 10th or 3 days from entry acceptance for entries after 5/10 or they will be forfeited. Payment can be made by check to All Alumni Competitions Inc, Zelle to alumnitoc@gmail.com or Venmo to @AllAlumni
- AEE Hunt Seat Members may enter one fences class and one flat class, **OR** the Alumni Cup.
- Management reserves the right to combine classes where entries are less than 6 riders. Classes 9 & 10 as well as classes 14 & 15 can be combined.
- Class entries are limited to 24 riders each and offered first come, first serve. Future Alumni classes are limited to 16 riders. Management may increase or decrease limits if entries and horses warrant.
- Regular classes will open to Alumni Cup riders, entries permitted, one week before the close of entries.
- Riders returning for any class final will be determined by the number of entries and judge's discretion.
- Schedule to be determined after all entries are compiled.
- \$25 Administration Fee added to each rider entry to cover office, EMT, water, and other amenities.
- *AEE Members: Riders who have paid AEE dues within the 2023-2024 season
- InActive Alumni: Riders who have shown with the IHSA at some point during their collegiate career but are currently not actively showing or paying dues with the AEE.
- Address of USET Gladstone is 1040 Pottersville Rd, Gladstone, NJ 07934
- This event is being held to emulate the IHSA undergraduate tournament of champions in Alumni style but is not associated with the undergraduate event or Beckett Run Inc. This is not an official IHSA sanctioned event.

- ENTER ONLINE AT: <https://www.alumnitoc.com/online-entry>

WHITE HORSE
• COFFEE ROASTERS •
EST. 2017

FREE SHIPPING
on subscriptions
& orders \$40+!

Blue Ribbon
CONCRETE
Blue Ribbon
GRAND PRIZE

Responsibly Sourced Coffee
USDA ORGANIC
USDA Organic Roaster
All Electric & Zero-Emissions Roasting
100% Compostable Packaging

www.WhiteHorseCoffeeRoasters.com



dreamers & schemers

HELPING EQUESTRIANS WEAR
THEIR FEELINGS SINCE 2014

find your match at
dreamernschemers.com



SAFE
RELIABLE
WORLDWIDE



We Fly Your Horse



bastian@equijet.com | 1-833-EQUIJET | www.equijet.com

Equestrian Fitness Academy



12 Week Fitness Program

WHAT IS EFA?

I created EFA with one specific goal in mind, to help equestrians adopt health and wellness practices into their lives both physically and mentally. Equestrians looking to improve their riding performance must train and recover like athletes.

EFA is a functional 12 week fitness and wellness coaching program guaranteed to boost riding performance through improved stability, suppleness, strength and stamina.

Individual & Group Programs

- Time Effective Workouts
- Coaching & Accountability
- Cutting Edge Technology
- Proprietary Fitness Programming



Easy to Follow Workouts



Rider Mindset



Like-Minded Community



SCAN ME



The progressive variety of the EFA program keeps riders intrigued and challenged in each phase.

Your Horses Performance Depends On You



ifafit.com



**SUPPORTING
AND
CONNECTING
THE ADULT
AMATEUR
EQUESTRIAN
COMMUNITY**



ADULTAMMYSTRONG.COM





Hunt Seat Classes

1. Alumni Flat:

Sponsored by Sandra Sayre

Entry Fee: \$45 - USHJA Outreach WTC

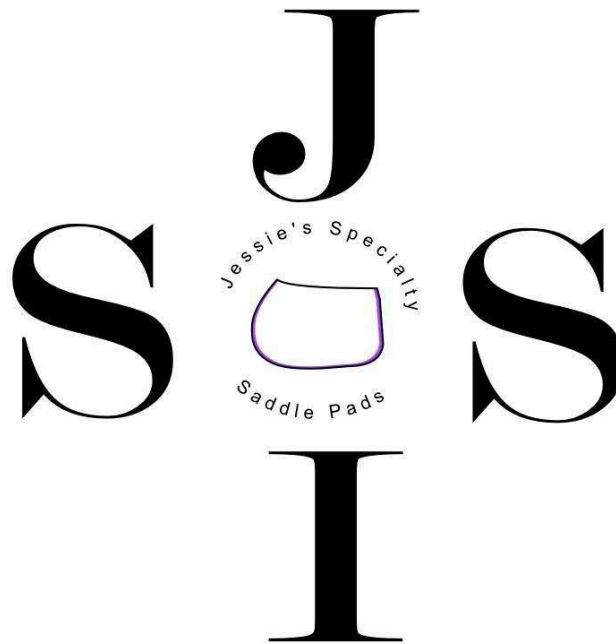
Open to active AEE members. Heats to be run if required with a maximum of the top 8 returning for the final, at the discretion of the judge. Only active alumni* are eligible to compete. Top 6 ribbons awarded. Riders may not cross enter into the Alumni Cup.

DREAMERS
&
SCHEMERS

2. Alumni Flat Advanced:

Entry Fee: \$45 - USHJA Outreach WTC

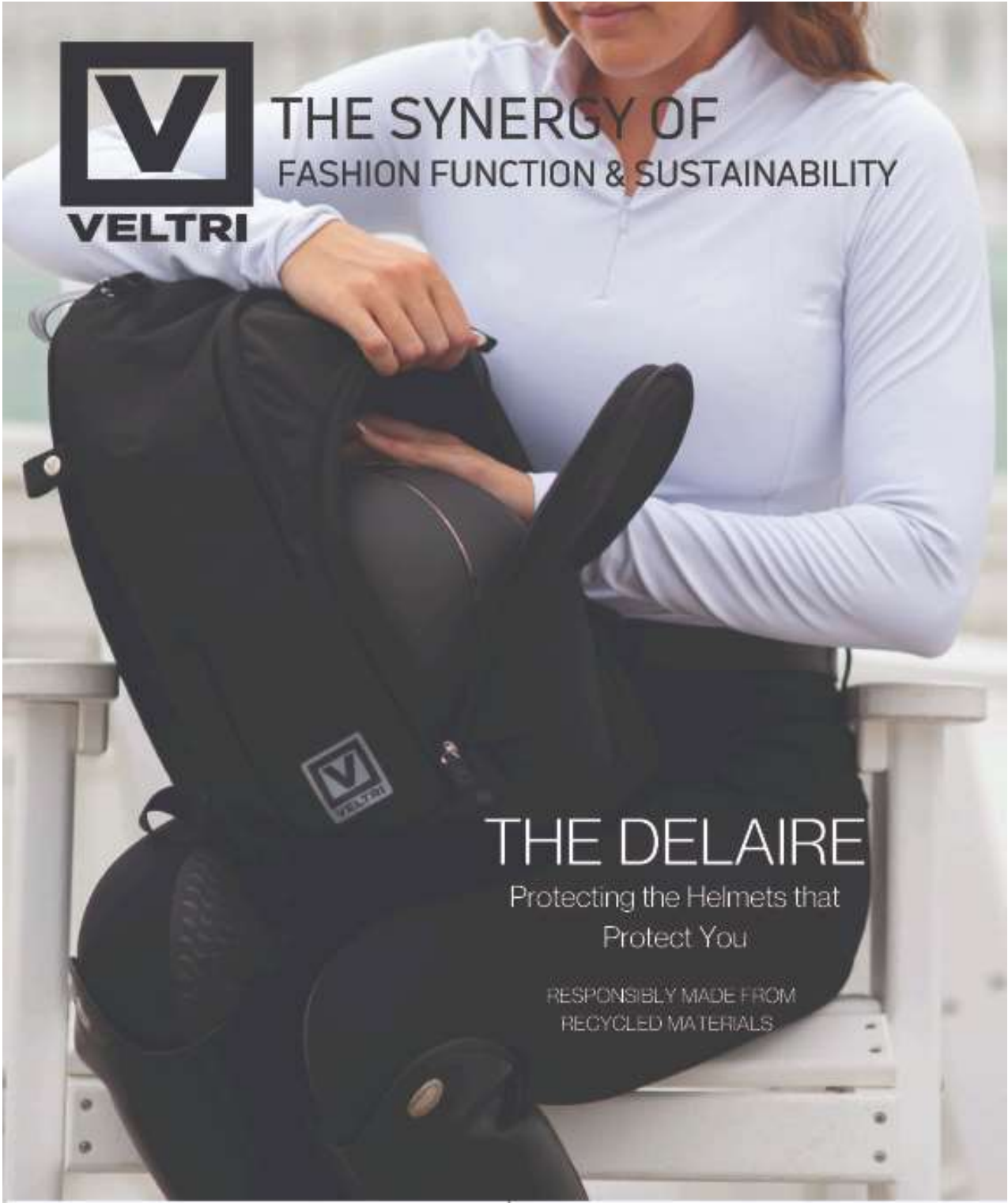
Open to active AEE Members. A very challenging flat class utilizing many if not all eligible USEF rulebook tests. Riders will be required to drop stirrups. Heats to be run, if required, with a maximum of the top 8 riders returning for the final, at the discretion of the judge. Only active alumni* are eligible to compete. Top 6 ribbons awarded.



Jessie Ann Green, Owner
jessie.ann.bolash@gmail.com



THE SYNERGY OF
FASHION FUNCTION & SUSTAINABILITY



THE DELAIRE

Protecting the Helmets that
Protect You

RESPONSIBLY MADE FROM
RECYCLED MATERIALS

www.veltrisport.com

instagram @veltrisport



show off



For fifty years, The Clothes Horse
has been handcrafting
custom made bespoke horse
garments with artistry and integrity.
Each time. Every time.
That's our commitment to you.



www.theclotheshorse.com
856.829.8460





Lynn Artistry *Custom Pet Portrait Artist*

All breeds * All disciplines * All pets
Commissions open

IHSA Alumni owned and operated
Sponsored "Horse of the Day" prizes

lynmartistry@gmail.com

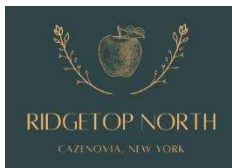
 @Lynn_Artistry Lynn Artistry 



3. #ADULTAMMYSTRONG Alumni Fences (2'3):

Entry Fee: \$45 AEE Alumni, \$55 InActive - USHJA Outreach Equitation 2'3"

To be shown over a course of 8 fences at 2'3 with at least one change in direction. Top 4 riders asked back to test. Top 6 ribbons awarded. Riders may not cross enter into the Alumni Cup. InActive alumni may only cross enter into Reunion flat or any western class.



4. Alumni Fences (2'6):

Entry Fee: \$45 - USHJA Outreach Equitation 2'6"

Open to AEE members. To be shown over a course of 8 fences at 2'6 with at least one change in direction. Top 4 riders asked back to test. Only active alumni are eligible to compete. Top 6 ribbons awarded.

ColiCare just got
even better with
~~\$10,000~~
\$15,000
colic surgery reimbursement!

ColiCare
FROM SMARTPAK



Protect your horse with
the best colic coverage:

- Highest reimbursement amount
- Lowest entry price point
- Most options to choose from
- Easiest to enroll & file claims



Scan to shop eligible supplements
starting at just \$1.62/day,
or visit SmartPak.com/ShopColiCare

 SMARTPAK

SmartPak.com | 1-800-461-8898



**MARYLAND
SADDLERY**
MARYLANDSADDLERY.COM

**We work hard to make riding for life
affordable for you!**

With the gear **you** need & goodies **your**
Horse will love, at Every Price Point...

Fresh New Arrivals Every Day
Online and in Our 3 Stores!

**We are "Marshall's"
for Horse People!**



Shop all of our locations...
Butler ~ Crofton ~ Hockessin
marylandsaddlery.com

Thank you

S
SEA SHORE STABLES

2024 Jump Sponsor

Bonnet Charms



Crop Charms



DUBOIS CHEVAL

CELEBRATING THE CHARM OF HORSES



Number Pin Charms



Visit us at
duboischeval.com
or on Instagram
[@duboischeval](https://www.instagram.com/duboischeval)

Tentative Schedule:
Saturday June 8th: Main Ring

8AM Start

AEE National Western Classes

All Western Classes

Exhibitor Party 4pm

Sunday June 9th : Main Ring

8 AM Start

AEE Nationals Hunt Seat Classes

All Fences

Break – Clear Fences / Senior Celebration

All Flats followed by Flat Finals



SUCCESS EQUESTRIAN
SADDLE PADS WITH PURPOSE

Ride in the
“No Slip, Sure Grip”
Saddle Pad of Champions!

Hunter/Jumper • Dressage • Cross Country

Deluxe Hunter
Small, Medium,
Large, X-Large

*Deluxe Dressage
Friction Free*
White or Black
Medium, Large

Preferred pad of pictured
pro rider Rachel Kennedy

Available in Stores Nationwide
www.successesequestrian.com
info@successesequestrian.com
215-794-7004

A portion of all proceeds
is contributed to the EAF



#WeRideTogether

120

is the average number of victims before a predator is caught.

50%

of athletes have experienced sexual harassment or abuse.

1 in 4

college athletes will be sexually harassed or assaulted by a coach or other athletic authority figure by the time they graduate.

We All Have a Role to Play

in protecting athletes by upholding best practices, staying informed, & destigmatizing conversations about misconduct and abuse.



You Are Not Alone.



Learn more at www.weridetogogether.today
We Ride Together, Inc. is a nonprofit, section 501(c)(3)

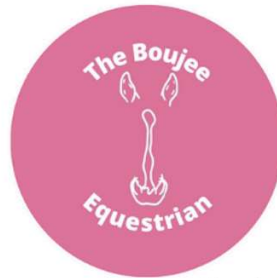
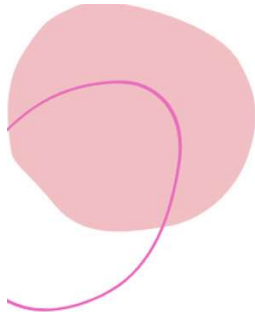


2023 High Score Award Recipients



**Western Champion:
Serena Dittenber**

**Hunt Seat Champion:
Logan Mayhew**



Use Code:
ATOC10
for 10% off
your order

Did you know that horses can read your facial expressions and remember them later that day?

The Boujee Equestrian has fun, colorful Items that will surely make you and your horse smile which can improve your ride.



- Clothing
- Glass Can cups
- Tumblers
- Saddle Covers
- Stirrup Slippers
- Cell Phone Holders

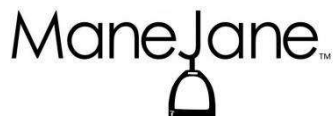


TheBoujeeEquestrian.com



www.twobayhorsesdesigns.com





5.

Alumni Cup:

Entry Fee: \$65 - USHJA Outreach Equitation 2'6"

Each Zone may send 3 AEE riders to participate in the Alumni Cup. Additional entries open first come first serve up to 24 riders. The class will be run Cacchione style with all riders receiving a score over fences and on the flat. To be shown over six or more fences at least 2' 3" in height and not to exceed 2' 9", fence width not to exceed height, and including at least one change of direction. A minimum of the top 4 and a maximum of the top 8 riders will be asked back to test. Testing will be performed on the flat and can include USEF tests 1-19. Perpetual trophy and top 8 ribbons awarded.



6.

Future Alumni Cup:

Entry Fee: \$65 - USHJA Outreach Equitation 2'6"

Entries limited to 16 graduating seniors, if the maximum riders have entered, limits on the number of seniors from each IHSA region may be imposed. The class will be run Cacchione style with all riders receiving a score over fences and on the flat. To be shown over six or more fences at least 2' 3" in height and not to exceed 2' 6", fence width not to exceed height, and including at least one change of direction. A minimum of the top 4 and a maximum of the top 8 riders will be asked back to test. Testing will be performed on the flat and can include USEF tests 1-19. Perpetual trophy and top 8 ribbons awarded. Riders must have ridden at a minimum Novice Level.



Steve Maxwell
Owner and Operator

campusequestrian.com

P.O. Box 2379
Princeton, NJ 08543

Tel: 732-589-0947 • editor@campusequestrian.com



7. campusequestrian.com **Reunion Alumni Fences (2'6):**

Entry Fee: \$55 - USHJA Outreach Equitation 2'6"

To be shown over a course of 8 fences at 2'6 with at least one change in direction. Top 4 riders asked back to test. Top 6 ribbons awarded. Open to any alumni of the IHSA regardless of when they last showed. Cross entry only into Reunion Flat.



8. **Reunion Alumni Flat:**

Entry Fee: \$55 - USHJA Outreach WTC

Heats to be run if required with a maximum of the top 8 returning for the final, at the discretion of the judge. Top 6 ribbons awarded. Open to any alumni of the IHSA regardless of when they last showed. Cross entry into either 2'3 Fences, 2'6 Reunion fences.

Our IHSA team supports ATOC and all of our outstanding Alumni riders!

We are honored to sponsor the 2024 ATOC High Point Western Rider buckle.

MHC
IHSA
Western Team
MOUNT HOLYOKE COLLEGE

Did you ride IHSA as an undergrad? Do you want to learn more about how to show as an alumni?

Contact Zone One IHSA Western Coordinator Kelli Wainscott at kwainsco@mtholyoke.edu



HORSESCENTS™

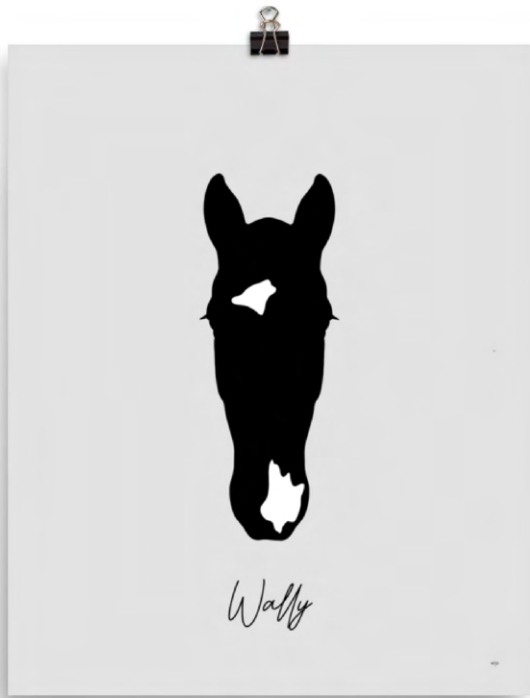
Nature's secret to a more relaxed horse

To order or learn more, visit our website at horsescentsinc.com





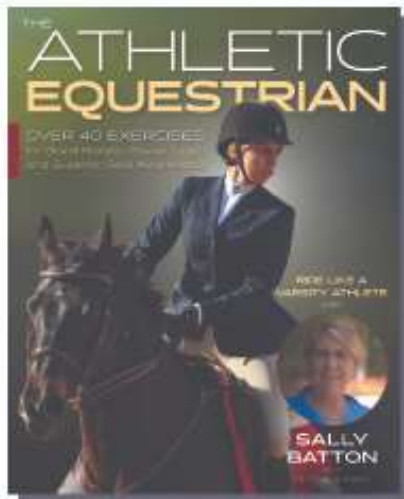
BROOKSBELTS.COM
Custom Fabric and Elastic Belts





**BECOME
THE BEST
EQUESTRIAN
ATHLETE
YOU CAN BE!**

**WITH COACH SALLY BATTON'S BEST-SELLING
BOOKS *THE ATHLETIC EQUESTRIAN* & *EQUICIZE!***



Whether you're a beginner or a pro, Sally Batton's methods, developed during her 30-plus years as a collegiate coach, are designed specifically to refine and strengthen riders!



CONTACT:

✉ ATHLETICEQUESTRIAN@GMAIL.COM
☎ (603) 359 - 0008
♥ WWW.EQUICIZE.COM
WWW.ATHLETICEQUESTRIAN.COM



9. **Alumni Horsemanship:**

Sponsored by Steve Maxwell

Entry Fee: \$45 Active Alumni, \$55 InActive Alumni

To be shown at a walk, jog and lope both ways of the ring. Leads will count. IHSA Tests 1-8 may be asked. Heats to be run, if required, with a maximum of the top 8 returning for the final, at the discretion of the judge. Top 6 ribbons awarded. Riders entered in Class 13 – Alumni Cup - may not cross enter into Class 9.

AVON

the company for women

10. **Advanced Horsemanship:**

Entry Fee: \$45 Active Alumni, \$55 InActive Alumni

To be shown at a walk, jog and lope both ways of the ring. Leads will count. IHSA Tests 1-9 may be asked. Heats to be run, if required, with a maximum of the top 8 returning for the final, at the discretion of the judge. Top 6 ribbons awarded.

PRESCRIPTIONS • VACCINES • SUPPLEMENTS • SUPPLIES

FarmVet
WE ARE HORSE HEALTH

panacur
(fenbendazole)
POWERPAC Equine Dewormer
Controls both larvae & adult parasites

SHOWSHEEN
ORIGINAL HAIR POLISH & DETANGLER
32 fl oz (946 mL)

ULTRA SHIELD EX
KILLS & REPELS HORSE FLIES TO SPEED UP
HEALING OF WOUNDS
300 mL (10.1 fl oz)

AssureGuard Gold
The Ultimate Digestive Aid

Alimend
VITALIZE
24/7 EQUINE STOMACH COMFORT

TOTAL CALM & FOCUS
Ramard

WWW.FARMVET.COM
888.837.3626 | info@farmvet.com



ESSEX CLASSICS



ESSEXCLASSICS.COM • RAISING THE STANDARD OF EQUESTRIAN STYLE





We Are U.S. Hunter Jumper



Celebrating 20 years of USHJA



TENDE COLEAUSHIA, TORI BILASAJSHIA, MCCOOL PHOTOGRAPHY, EST PHOTOGRAPHY, RACHEL MILEWSKIVUSHIA



Och La La
HOMEMADE PET TREATS

11. Alumni Reining:

Entry Fee: \$45 Active, \$55 InActive Alumni

To be shown individually in a pre-assigned pattern. Open to riders who have previously competed in Alumni Reining at ATOC or who have been in training over the past 12 months. Perpetual trophy and top 8 ribbons awarded.



STATE LINE TACK®

We make riding affordable.

30% OFF

On your next [Statelinetack.com](https://www.statelinetack.com) order
over \$49 with code **TACK24**





**KEEP
IT UNDER
POLO
WRAPS**

EQUIFIT.NET



Your leading provider of custom equestrian products.

- Stable Accessories
- Branding and Marketing
- Custom Horse Blankets
- Custom Apparel
- Engraved Products
- Promotional Products
- VIP Event Material
- Horse Show Prizes



Ride Every Stride Inc.
877-278-6588
info@rideeverystride.com
rideeverystride.com

Made for you.



12. Amanda Belcher Memorial Alumni Cup:

Entry Fee: \$65

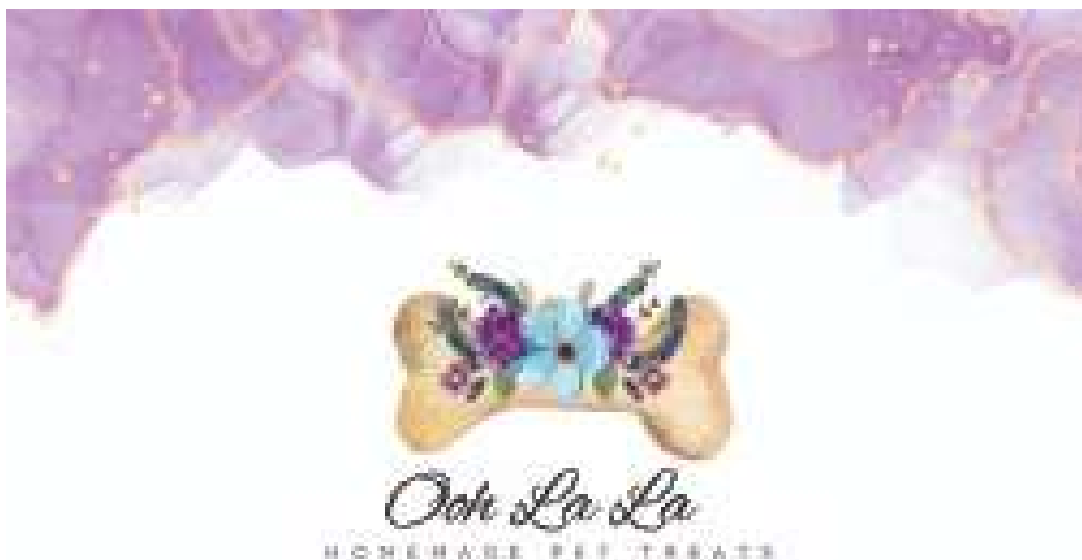
Each AEE Zone may send 3 riders to participate in the Alumni Cup. Additional entries open first come first serve up to 24 riders. The class will be run AQHA High Point Western Rider style with all riders receiving a score over in horsemanship and a pre-assigned ranch pattern. Additional testing at the discretion of the judge of a maximum of 8 riders will be asked back to test. Perpetual trophy and top 8 ribbons awarded.



13. Future Alumni Cup

Entry Fee: \$65

Each region is encouraged to send graduating senior riders to participate in the Alumni Cup. New in 2024, any Western undergraduate may enter but graduating senior entries will be prioritized. Entries limited to 16 undergraduate riders, if the maximum riders have entered, limits on the number of seniors from each IHSA region may be imposed. The class will be run with all riders receiving a score over in horsemanship and a pre-assigned **ranch** pattern. Additional testing at the discretion of the judge of a maximum of 8 riders will be asked back to test. Perpetual trophy and top 8 ribbons awarded.





MOLLY'S CUSTOM SILVER

CUSTOM AWARD BUCKLES | PERSONALIZED BUCKLES | SILVER WESTERN JEWELRY



**20+ YEARS OF THE
HIGHEST QUALITY
BELT BUCKLES**



**FOR RODEO AWARDS, COMMUNITY EVENTS, BUSINESSES,
WEDDINGS AND MORE.**

FOLLOW US!
DON'T MISS OUR
SOCIAL MEDIA GIVEAWAYS



@MOLLYSCUSTOMSILVER

**ALL OF OUR ITEMS ARE HAND MADE
AND AVAILABLE TO ORDER ONLINE**

(682) 717-1770

MOLLYSCUSTOMSILVER.COM

Christa's
AVON



Visit the AVON
table for sunblock,
aloe vera & more!

Christa Bramberger
Saratoga, NY
(914)960-3290
www.YourAvon.com/Christa914



14. Alumni Ranch Riding

Entry Fee: \$45 Active, \$55 InActive Alumni

To be shown individually in a pre-assigned pattern. Riders entered in Class 13 – Alumni Cup, may not cross enter into Class 11. Perpetual trophy and top 8 ribbons awarded.

15. Cat Memorial Advanced Alumni Ranch Riding

Entry Fee: \$45 Active, \$55 InActive Alumni

To be shown individually in a pre-assigned pattern. Perpetual trophy and top 8 ribbons awarded.

CERTIFIED HORSEMANSHIP ASSOCIATION®

COMPOSITE HORSEMANSHIP MANUAL
LEVEL 1 - LEVEL 2 - LEVEL 3 - LEVEL 4

STANDARDS FOR EQUESTRIAN PROGRAMS

TRAIL MANUAL

THE EQUINE PROFESSIONAL MANUAL
The Art of Teaching Riding

HORSEMANSHIP
EDUCATION
PUBLICATIONS

Make Sure to Have Them All in Your Tool Box

~ ORDER ONLINE WWW.CHA.HORSE ~

Industry Leader in Horsemanship Education & Certification

WWW.CHA.HORSE | 859-259-3399 | FIND US: CHA



GREEN
IS THE NEW
BLUE

WE'RE **MAKING STRIDES** TOWARD A

#SustainableSport

greenisthenewblue.org

 [@greenisthenewblue](https://www.facebook.com/greenisthenewblue) 





**Animals
speak louder
than words.**

If there's greatness on the inside,
it shows on the outside.

purinamills.com/horse-feed



FEED GREATNESS™



© 2016 Purina Animal Nutrition LLC. All rights reserved.

Sergeantsville Grain and Feed
735 County Rd 523
Stockton, NJ 08559
609-937-0807
www.sergeantsvillegrainandfeed.com



Lodging Recommendations

Somerset Hills Tapestry Collection - 200 Liberty Corner, Warren, NJ 07059

\$189 Room Block – Book Here:

<https://www.hilton.com/en/book/reservation/rooms/?ctyhocn=EWRSTUP&arrivalDate=2024-06-07&departureDate=2024-06-09&groupCode=90e&room1NumAdults=1>

Residence Inn - 37 Worlds Fair Drive Somerset, New Jersey 08873

\$132 Room Block – Book Here:

<https://www.marriott.com/event-reservations/reservation-link.mi?id=1706224679039&key=GRP&app=reservation-link&fbclid=IwAR1hTGQw-ZD7bbnKZLdNq-PwMQxlBIXDrC4elxRG4ooiUZN8O9gnD2LKTAE>

Courtyard Marriott - 595 Martinsville Road Basking Ridge, New Jersey 07920

\$115-\$135 Room Block – Book Here:

<https://www.marriott.com/event-reservations/reservation-link.mi?id=1706967126251&key=GRP&app=reservation-link&fbclid=IwAR11kvwPBtrrE6wPShgWb2ngTKtBvNsYeCXnyEwsc3R8hSrOn9dyjah4g-0>



PERRI'S[®]

MADE IN THE USA
never looked so good.

PERRISLEATHER.COM

A leg up on your future...

THE
Equestrian
College
Advisor

SUPPORT FOR:

- College search and list-building
- Team recruitment
- Career/major advising
- Application preparation and submission



Learn more or book a
consultation at:
equestriancollegeadvisor.com

Biarritz
for ever.



Made in the Basque country and proud of it. Born in 1985 at the heart of our workshop, the saddle Biarritz has evolved in elegance, balance and comfort. For nearly 30 years our 33 bespoke saddlers have been making and assembling the 43 pieces of this saddle. Its manufacture requires 18 hours of work and the perfect mastery of the craft that is French saddlery.

This craftsmanship and expertise give the saddle accuracy and contact over jumps, on the flat and in the field. And make the Biarritz the flagship product for Devoucoux the world over.



Alumni Equestrian Events Nationals Classes

Hunter Seat Equitation on the Flat Sponsored by Athletic Equestrian

Entry Fee \$100

Open to riders who have qualified through the **Zone rules** in Alumni Hunter Seat Equitation on the Flat at the 2024 Zone Championships. Riders will be invited by the National Alumni Director. If unable to compete, an invitation will be offered to the next highest placed rider. To be judged at the walk, trot and canter in both directions. Tests 1-9 may be asked.

Hunter Seat Equitation over Fences Sponsored by Spoiled Rotten Animal Therapy

Entry Fee \$100

Open to riders who have qualified through the **Zone rules** in Alumni Hunter Seat Equitation over Fences at the 2024 Zone Championships. Riders will be invited by the National Alumni Director. If unable to compete, an invitation will be offered to the next highest placed rider. To be shown over six or more fences not to exceed 2'9" in height and including at least one change of direction. Fence width not to exceed height. Test 1-6, 9, 12, 13 may be asked.

Western Horsemanship Sponsored In Memory of Amanda Belcher

Entry Fee \$100

Open to riders who have qualified through the **Zone rules** in Alumni Western Horsemanship at one of the 2024 Zone Championships. Riders will be invited by the National Alumni Director. If unable to compete, an invitation will be offered to the next highest placed rider. To be shown at the walk, jog and lope in both directions as well as individually in a preassigned pattern. Tests 1-9 may be asked.

Ranch Riding Sponsored by Lost Acres Vineyard

Entry Fee \$100

Open to riders who have qualified through the **Zone rules** in Alumni Western Ranch at one of the 2024 Zone Championships. Ties will be broken based on the number of penalties. Riders will be invited by the National Alumni Director. If unable to compete, an invitation will be offered to the next highest placed rider. To be shown individually in a preassigned pattern.



Airport Recommendations

Newark (EWR) ~ 1 hour | Trenton ~1hr | Other NYC Airports ~ 2 hour



If you run a barn, you're already spending lots on horse care products and supplies.

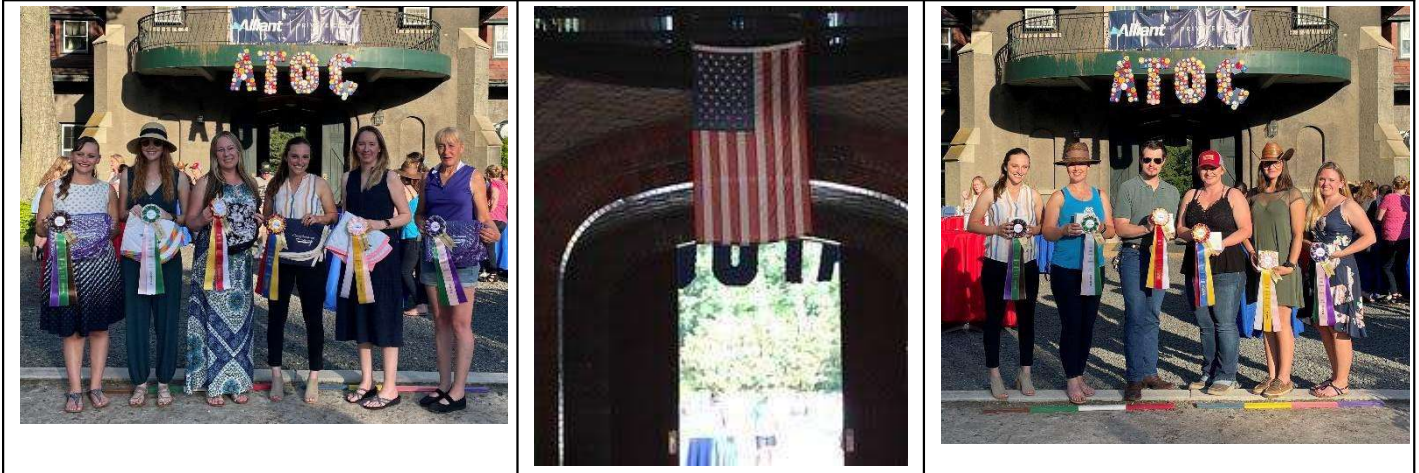
**IT'S TIME YOU GET REWARDED
FOR IT.**

Best-in-class horse supplies,
delivered straight to your
barn door.

[CORROSHOP.COM](https://www.corroshop.com)



2024 Exhibitor Party



USET Gladstone *1040 Pottersville Rd *Gladstone * NJ 07934
Beginning during Flat Finals (4/5-7PM)
Refreshments, Food & Awards!





NATIONAL SNAFFLE BIT ASSOCIATION

is committed to

rewarding excellence

NSBA World Championship Show
Over \$1,000,000 in cash and prizes

Breeders Championship Futurity
\$360,000+ paid in 2022

Color Breeders Championship Futurity
\$85,000+ paid in 2022

Market Insurance BCF Yearling Sale
Over \$1,000,000 paid to graduates to date

Stallion Incentive Fund
Over \$125,000 paid annually

Youth Smart Points
\$56.26 per point paid in 2021



Photo by Rachel Reilly Photography



improving the industry
with every program

The best
DESERVES THE BEST.

#ProElitePro, Amanda Steege



PROELITE

Amanda knows to give her champions the best chance to win, they need the very best nutrition. That's why they eat ProElite® feeds. Because it's the only line of ultra-premium horse feed with nutrition-locked formulas for consistent nutritional quality.

VISIT [PROELITEHORSEFEED.COM](https://www.proelitehorsefeed.com) TO LEARN MORE.

© 2021 Cargill, Incorporated. All rights reserved.